



ROCKY VISTA UNIVERSITY

TRACKS & SPECIAL PROGRAMS

About the Department 23/24 AY

The Tracks and Special Programs Department is a division of the RVU COM and strives to create and deliver optional curricular programming strategically crafted to offer students an opportunity for inspiring educational experiences in a variety of health care areas as they endeavor to serve patients in diverse communities with compassion, integrity, and excellence. Also, all assist with enhancing student competition for residency selection.



Currently ,this department offers:

- Six different tracks to which COM 1 students can apply.
- Multiple single semester electives for all RVU students.
- Approval of all international externship sites for COM clinical students and elective locations for first- and second-year students.

This department also administers the review and approval of all International Externship/Medical Outreach/Trip or Research sites for RVU students at all levels.





Academic Requirements

Emphasis is ALWAYS placed on a student's core education. Tracks and Special Programs should be a compliment to that. They should also be considered an important tool for helping students in their search for and eventual placement in Residency and becoming a compassionate and competent physician.

We strive to mirror the RVU core values in everything we do.

Official department policies surrounding academic standing and participation in Tracks and Electives is updated every academic year as necessary and the official Tracks & Special Programs Dept. Policies & Procedures Manual resides under the university's Dynamic Policy repository available to the RVU community online.

Students in good standing as defined in the student handbook are eligible for our programs. All students are encouraged to participate in our programs and should consult advertisements and department policies at the time of application.



DEPARTMENT Coordinators



Camille Bentley DO, MPH, FACFP,
Chair, Tracks & Special
Programs Department
cbentley@rvu.edu
720.875.2814

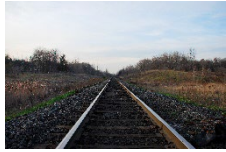


CO - Becky Steenburg
rsteenburg@rvu.edu



UT - Judy Simmons
jsimmons@rvu.edu





Tracks

- ✓ Tracks are open to COM students only.
- ✓ A student may apply to more than one Track but may only participate in **one Track throughout their medical education.**
- ✓ Applications for all tracks open in the fall of **first year** and begins in January.
- ✓ Tracks are graded **Honor/Pass/Fail** which appears on your official transcript.
- ✓ **Tracks are 3.5-year programs** outside of the core curriculum. A student will stay in their chosen track through the duration of their education and can Graduate with distinction of completing all the didactic and clinical requirements for that track.



Electives

- ✓ Electives are open to any RVU Student, COM, MSBS, PA.
- ✓ A student may take up **to two electives per semester.**
- ✓ Track students may also take electives.
- ✓ Students register for electives after attending the first class.
- ✓ Electives are graded **Pass/Fail** which appears on your official transcript.
- ✓ **Electives are one semester** each and may cover topics just touched upon in the normal curriculum and/or may involve current hot topics in medical training.



Course Offerings

Note that not all offerings are available at both campuses.



Tracks

1. Academic Medicine & Leadership – CO/UT
2. Digital Health – CO/UT
3. Global Medicine – CO/UT
4. Physician Scientist – CO/UT
5. Rural and Wilderness Medicine – CO/UT
6. Urban Underserved – CO



Electives

1. History of Medicine – CO
2. Integrative Medical Nutrition – UT/CO
3. Integrative Pain Management – CO
4. Introduction to the Research Process – CO/UT
5. Medical Spanish – CO/UT
6. Medicine in Film – CO
7. Religion, Health & Healthcare – CO/UT
8. Sexual Health - UT
9. Vaccines – UT/CO
10. Global Medical Outreach – CO/UT



Tracks

Tracks & Special Programs Department



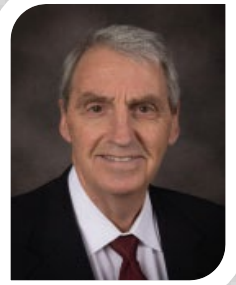
Academic Medicine and Leadership

Directed by Dr. Clyde Jensen (UT), Dr. Kelli Glaser & Dr. Matt McEchron (CO)

The Academic Medicine and Leadership (AML) Track is a 4 credit longitudinal, enrichment path that provides first through fourth year medical students with opportunities to develop physician leadership skills. It is intended to strengthen the ability of its students to serve as student leaders in medical school and prepare its graduates to provide leadership in their hospitals, clinics, professional associations and communities.

AML students learn about physician leader skills and attributes from successful and nationally recognized medical educators and healthcare leaders. The track also engages students by modeling the structure of the pillars of academic medicine utilizing active teaching and learning, scholarship, and service.

Students learn about a variety of roles and teams within medical education and health systems, personality and leadership styles, health policy, healthcare financing, accreditation, and meeting management. Students practice such skills as professional networking, public speaking, curriculum and lesson design, research, advocacy, fostering diversity and organizing medical conferences.



Dr. Clyde Jensen

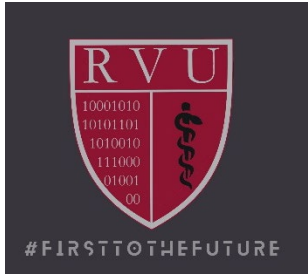


Dr. Kelli Glaser



Dr. Matt McEchron





Digital Health

Directed by Dr. Cole Zanetti, CO
Directed by Dr. Regan Stiegmann, UT

This 4credit track is for students who have a strong desire to learn about the cutting-edge world of delivering medicine digitally. These students will be on the forefront of this emerging industry. **Innovative thinkers, doers, and entrepreneurs will find mentorship, guidance, and inspiration as part of this track.**

The field digital health has seen rapid innovation over the last decade and shows no indication of slowing down. The further integration of technology and medicine will make quality healthcare more accessible for those who need it most. There is currently a severe lack of healthcare professionals with the training, competency, and experience necessary to utilize and advance digital health.

Students are required to complete 3 digital-related externships/activities during their clinical years.



Dr. Cole Zanetti



Dr. Regan Stiegmann





Global Medicine

***Directed by Drs. Camille Bentley and Vickie Roettger, CO
Directed by Dr. Mark Wardle, UT***

This 5-6 credit track provides a survey, exposure, and clinical education in multiple aspects of global medicine. Students who have a strong desire to work or volunteer in an international capacity will find this track indispensable. Students will also be well prepared to work with diverse populations here in the US. They will have ample time to discuss the complexity of health care affecting global populations in an inquiry based small group setting. Topics may vary each year depending on student interest and changes in the core curriculum. Current topics may include Global Public Health and Ethics, Tropical Medicine, Global Burden of Disease, Health Systems and Assessment, Climate Change and culturally appropriate clinical work in resource poor areas.

Students are required to complete 4 global-related (2 overseas) activities during their clinical years.



Dr. Camille Bentley



Dr. Vickie Roettger



Dr. Mark Wardle

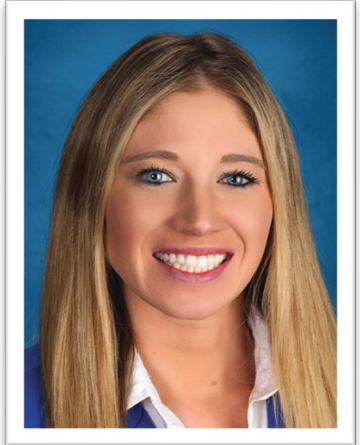


Physician Scientist

Directed by Dr. Rebecca Ryznar, CO

Directed by Dr. Amanda Brooks, UT

Students in this 5-6 credit track learn the many aspects of conducting independent research, exploring the key components at each step in the scientific process. The types of research highlighted in this course may include basic science, clinical, translational, medical education and bench research. Students in this track have previous experience doing bench research and there is a minimally accepted GPA as determined by the Course directors each year. Physician Scientist Track students have a strong desire to understand what is required to be a successful principal investigator and will continue their research during the clinical years.



Dr. Rebecca Ryznar



Dr. Amanda Brooks



Rural and Wilderness Medicine

Directed by Dr. David Ross - CO

Directed by Dr. Tom Bigham - UT

Students in this hands-on, 5-6 credit track are exposed to a robust extracurricular education; learning skills applicable to medicine, surgery, emergency medicine, OB & more.

This track may offer unique off-campus, rural and wilderness Experiential Field Activities (EFAs), during the first 2 years. Then, students are required to complete 4 rural externships in their clinical years.



Rodeo "Accident"
Baggs, WY 2019



Dr. Dave Ross



Dr. Thomas Bigham





Urban Underserved

Directed by Professor Jensen Fisher & Dr. Jean Bouquet – CO

Unique to the Colorado campus, this 4 credit track is designed to introduce students to the complex needs of a very diverse array of urban underserved populations. Students will get didactic and hands-on experience with marginalized, underserved, and vulnerable populations such as: those with chronic pain or experiencing addiction, veterans, LGBTQ+ patients, sex-workers, women, patients that are incarcerated, refugees and immigrants, those experiencing homelessness, and other patients with various socioeconomic challenges to healthcare.

Students will learn to peel back the layers of health issues and other social determinants in their quest to serve the urban underserved. Students will come away from this track with a new understanding for the vulnerable and a broadened sense purpose as a physician. Students are required to complete 3-4 urban externships/experiences during their clinical years.



Prof. Jensen Fisher



Dr. Jean Bouquet



Applying for Tracks

All COM students may apply in the fall of their first year,
regardless of current academic standing.

Applications open late Oct. to early Nov. for approximately 2 weeks.

Applying for a track is NOT a commitment to participate in a track, it's simply the first step in the conversation to see if a track program is right for you!

If you have an interest, apply!

Military Students

Military students, or those considering accepting a military scholarship, must take part in the RVU Military Medicine Pathway. Because of this level of commitment, military students are unable to participate in a track. They may, however, take electives.

**For more information on the Military Medicine Pathway,
contact the Military Program Coordinators,
UT - Tamara Campbell at tcampbell@rvu.edu
CO – Frank Fidani at ffidani@rvu.edu**

RVU FELLOWSHIPS

Track students are welcome and encouraged to pursue an RVU Fellowship, just as with the core, a fellowship extends a student's time in their track by a year – they simply graduate with distinction from the track with the next class. For more info on fellowships, visit

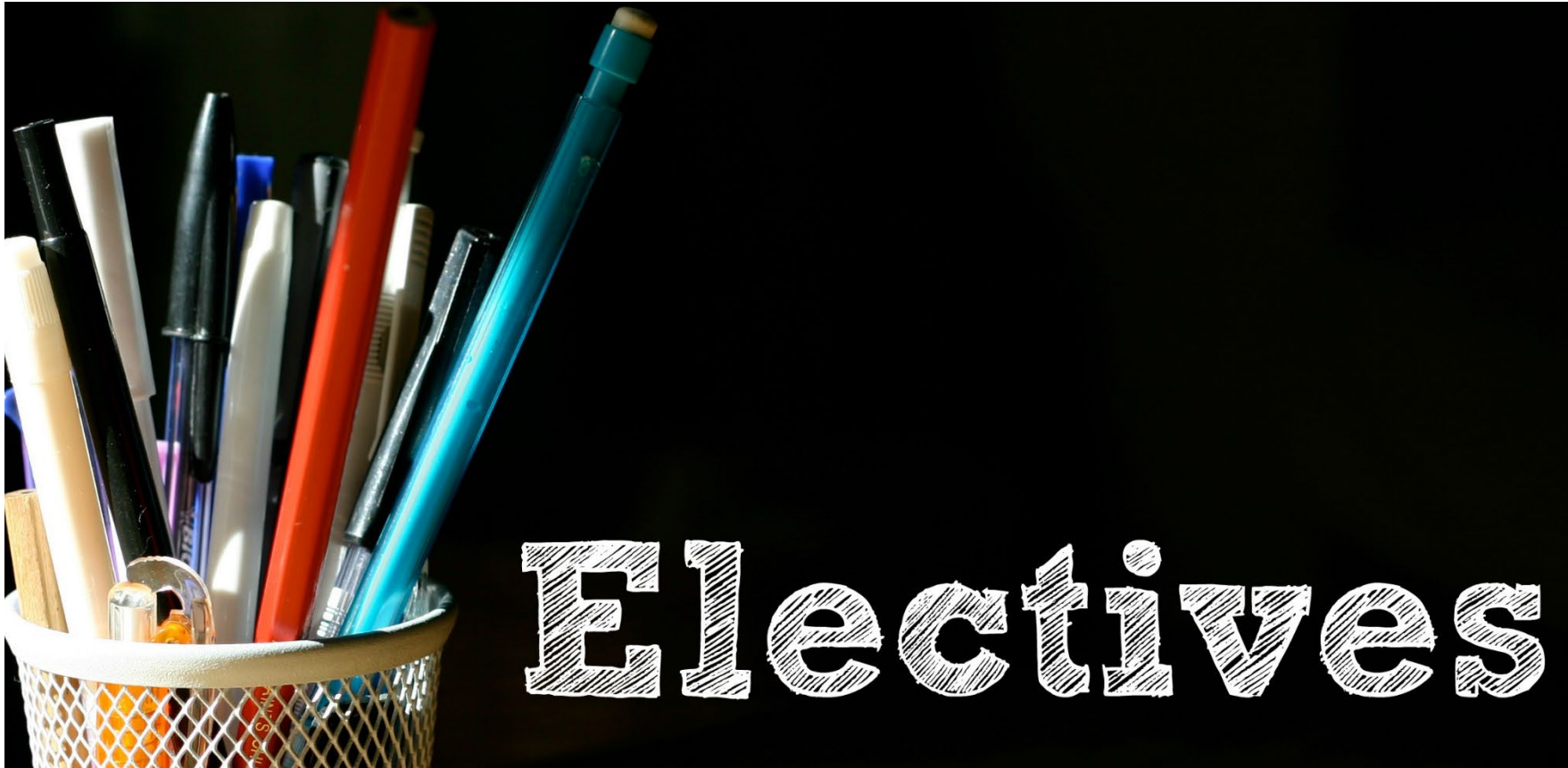
<https://www.rvu.edu/academics/fellowships/>



TRACK OR TREAT Class of 2027

Join us for a fun
fall-themed event where
you can visit with
current track students and
course directors.





Tracks & Special Programs Department

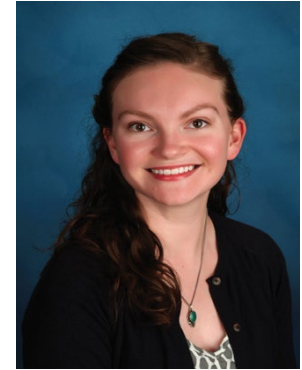


History of Medicine Elective

*Directed by Jensen Fisher, MLIS and Elizabeth George, PhD.
CO Only*

This course series looks at the role of doctors, patients, diseases and societal reaction to them over time, asking how medicine, disease, and health have been motors for change.

This course encourages participants to understand how contemporary medicine differs from but is indelibly marked by its past. It introduces participants to the methods and tools of research in the history of medicine and encourages the critical analysis of differing historical interpretations, including the participant's own.



*Dr. Elizabeth
Moffett-George*



Prof. Jensen Fisher



Integrative Medical Nutrition

Directed by Dr. Amberly Reynolds

UT/CO

Nutrition is a discipline that is embraced by a variety of healthcare professions and philosophies that are typically not represented in any single health sciences education institution. The need and desire for this kind of education has been expressed by both RVU faculty and students.



Dr. Amberly Reynolds

This elective utilizes an inter-professional approach to the topic by multiple healthcare professions.

Course Objectives:

- **Familiarize students with the major nutrition content that primary care physicians should know.**
- **Introduce students to the diversity of professions and healthcare philosophies incorporate nutrition into disease prevention and intervention.**



Integrative Pain Management

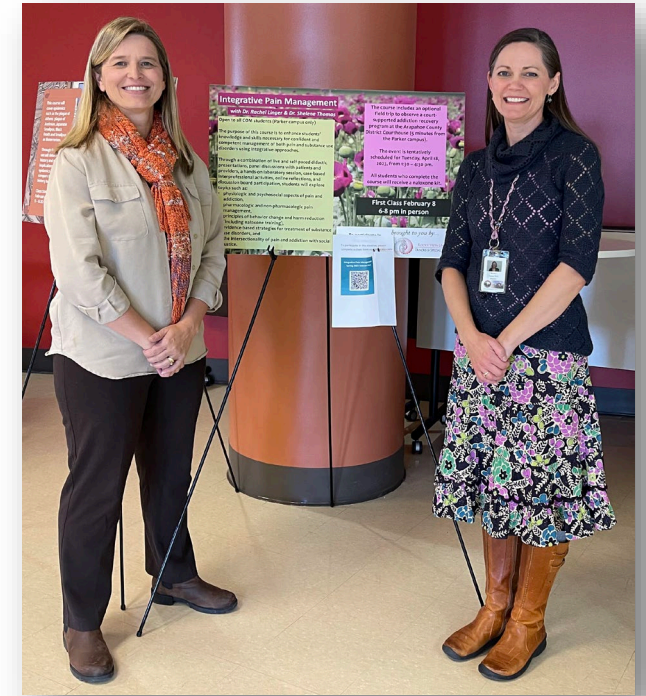
with Dr. Rachel Linger & Dr. Shelene Thomas

Open to all COM students (Parker campus only)

The purpose of this course is to enhance students' knowledge and skills necessary for confident and competent management of both pain and substance use disorders using integrative approaches.

Through a combination of live and self-paced didactic presentations, panel discussions with patients and providers, a hands-on laboratory session, case-based interprofessional activities, online reflections, and discussion board participation, students will explore topics such as:

- physiologic and psychosocial aspects of pain and addiction,
- pharmacologic and non-pharmacologic pain management,
- principles of behavior change and harm reduction (including naloxone training),
- evidence-based strategies for treatment of substance use disorders, and
- the intersectionality of pain and addiction with social justice.



Dr. Thomas

Dr. Linger



It is estimated by the U.S. Census Bureau that by 2050, the United States will have 138 Million Spanish speakers.

Medical Spanish Elective

Co-Directed by Dr. Mark Wardle and Dr. Thomas Bigham - UT

Directed by Dr. Ann Trawick - CO

Open to 2nd year COM students only in the Fall Semester, this course is intended to introduce the practical language skills used in clinical settings to assist with the interaction of Spanish-speaking patients.

This includes an emphasis on the common medical vocabulary that health care workers may encounter in the workplace. Students must have some Spanish. A pre-test will be conducted to help level students. Classes will likely be a mix of fluency.



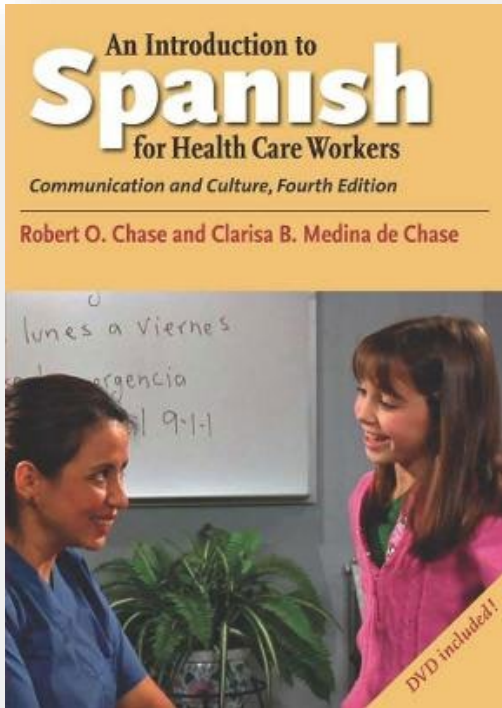
Dr. Tom Bigham



Dr. Mark Wardle



Dr. Ann Trawick





Dr. An Dang



Co-Directors – Dr. An Dang, Mr. Joe Richard – CO Only



Mr. Joe Richard

This course uses film as a medium for discussion of ethical, humanitarian, and professional topics relevant to healthcare professionals. Students should be prepared to explore medicine from a different vantage point and learn something about themselves in the process.

Previous films discussed in class include
Gattaca, The Farewell, The Doctor, and Miss Evers' Boys



Religion, Health & Healthcare

Dr. Qamrul Choudhury, Director
CO/UT



Dr. Qamrul Choudhury

This course neither advocates nor criticizes religious traditions, but develops knowledge, skills, and attitudes that enable students to communicate with and care for patients across traditions and to think critically and empathetically about the role that religion plays as a variable in health and healthcare.

Open to students in the COM and MSBS programs on both campuses.





Dr. Ben Brooks

Vaccines

Course Director, Dr. Ben Brooks
UT/CO



Students will obtain an in-depth understanding of how vaccines are produced by industry, undergo preclinical evaluation, vaccine public health topics, and evaluation for efficacy in clinical trials. The goal will be to inform students about vaccine topics to enable students to be able to discuss vaccines with their patients.

Focus will be on domestic perspectives of vaccination for public health but will include some global health discussions on selected publications, and a final course research project individually developed by the student.

This elective course is open to OMS I & II and MSBS students.



How to show interest in and get registered for electives.

1. Watch for Advertising in August and January.



2. Watch your email for more information on how to express interest.

Some courses will use an iNet elective interest form, others will ask for a direct email.



Space is Limited

3. Course directors will seat their classes based on several factors. Be sure you are aware of what is requested by the individual course directors.

4. Course Directors will issue an invitation for you to participate. After the second class, if it's not a good fit for you, you can drop without penalty.



ROCKY VISTA
UNIVERSITY

MYVISTA

5. Check myVista for confirmation of registration into the appropriate course(s).

ENJOY!

There is no additional tuition to take electives at RVU.





Global Medical Outreach

Tracks & Special Programs Department



Global Outreach Electives

Course Directors may include Dr. Mark Wardle, Dr. Ann Trawick, Dr. Thomas Bigham, Dr. Brooks Beal, Dr. Ben Wilde

Students will have the opportunity to join a spring break
global medical outreach trip to other countries.

Previous locations have included...

ECUADOR



DOMINICAN REPUBLIC



PANAMA

GUATEMALA



All students must undergo an academic and site approval process, as well as complete a travel file with the Office of Global Medicine, a division of Tracks & Special Programs





International Clinical Externships

Coordinated with the Office of Clinical Education

All third and fourth year RVU-COM students are encouraged to participate in at least one international externship, 2-4 weeks in length, during their clinical years.

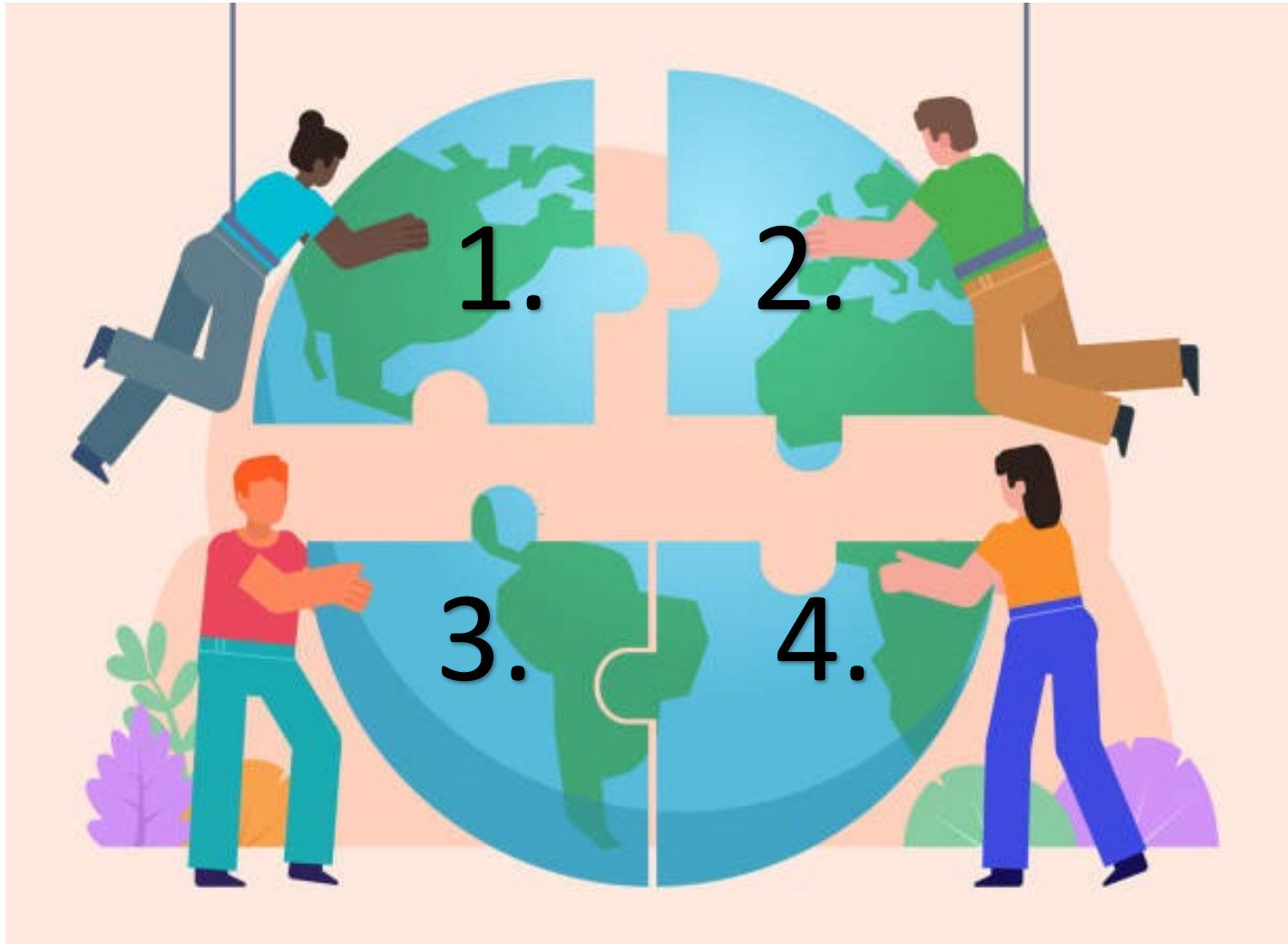
In fact, about 40% of each graduating class has completed some form of international medical training experience during their time spent at RVU.

Students may participate in one of the RVUCOM sponsored medical outreach trips or set up their own.

All students must undergo an academic and site approval process, as well as complete a travel file with the Office of Global Medicine, a division of Tracks & Special Programs



Global Medical Outreach – for credit*



1. Find an opportunity. First and Second Year students can participate in spring break trips sponsored by RVU. Third- and Fourth-year students can find trips through outside organizations or RVU-sponsored options.
2. Complete the Global Travel Academic Approval Form on iNet.
3. Once approved, complete the Registration form on iNet.
4. Complete a Travel File.

**note that there will be post-trip requirements to complete for credit.*



What is a “Travel File”

All students traveling overseas for RVU credit, whether sponsored by RVU or another organization for medical outreach, research or an externship are required to complete a Travel File with the Office of Global Medicine.

What completes a Travel File?

- ✓ Academic Approval Form
- ✓ General Registration Form
- ✓ Color Copy of Passport
- ✓ Proof of Vaccinations including - Typhoid, Tetanus, Hep A/B, COVID
- ✓ Proof of Medical Evacuation insurance
- ✓ Smart Traveler Enrollment Program (STEP)
- ✓ Copy of Flight Information
- ✓ Travel Warning Authorization, if needed
- ✓ Any other assigned task by the course director or the Chair



Once academic approval has been received and trip registration completed, students will gain access to their official secure OneDrive Travel File where they can upload all required documents.



CONTACT US

CO-ADMIN
BECKY STEENBURG
RSTEENBURG@RVU.EDU



CHAIR
CAMILLE BENTLEY,
DO, MPH, FACFP
CBENTLEY@RVU.EDU

UT-ADMIN
JUDY SIMMONS
JSIMMONS@RVU.EDU



**Thanks for
checking out the
Tracks & Special
Programs Department
at RVU!**

