




THE OFFICE OF PRE-CLINICAL
CAREER ADVISING PRESENTS:

WHO ARE YOU?

HARNESSING THE POWER
OF SELF ASSESSMENTS
& CIM



LUCKILY, YOU DON'T NEED TO
CONSULT A CRYSTAL BALL OR
HAVE YOUR PALM READ TO
FIND YOUR INNER SELF.

JUST FOLLOW OUR TIPS
BELOW...



CHARGE YOUR CRYSTALS AND RUB THE GOOP OUT OF YOUR THIRD EYE, WE'RE GOING ON A MISSION TO FIND OUR INNER SELVES.



DO YOU THINK YOU ARE...

- DOMINANT
- INFLUENCE
- STEADINESS
- CONTENTIOUSNESS

STEP 1:
VISIT WEBSITES & TAKE
ASSESSMENTS



- DISC ASSESSMENT
- CAREERS IN MEDICINE:

- PVIPS
- MSPI
- SKILLS INVENTORY
- PERSONALITY TYPE

CLICK



STEP 2:
LET THE RESULTS
GUIDE YOU

THINK OF YOUR RESULTS LIKE A PROFESSIONAL HOROSCOPE (THOUGH HOPEFULLY MORE ACCURATE).

THEY CAN POINT YOU IN DIRECTIONS YOU MAY NOT HAVE CONSIDERED. **DID YOUR RESULTS STRENGTHEN YOUR INTEREST IN A CERTAIN SPECIALTY? WAS THERE A SPECIALTY AAMC SAID YOU'D BE PERFECT FOR THAT SHOCKED YOU?**

YOUR RESULTS ARE A CASUAL, BUT USEFUL, WAY TO SHOW OFF YOUR HIDDEN ABILITIES.

THEY CAN GIVE ATTENDINGS & RESIDENCY PANELS A CLUE ABOUT WHAT STRENGTHS YOU WILL BRING TO THE TABLE AS A PHYSICIAN.

MAKE SURE TO HIGHLIGHT YOUR RESULTS WITH THEIR OWN DEDICATED SECTION IN YOUR EPORTFOLIO.

STEP 3:
TAKE SCREENSHOTS &
POST TO EPORTFOLIO

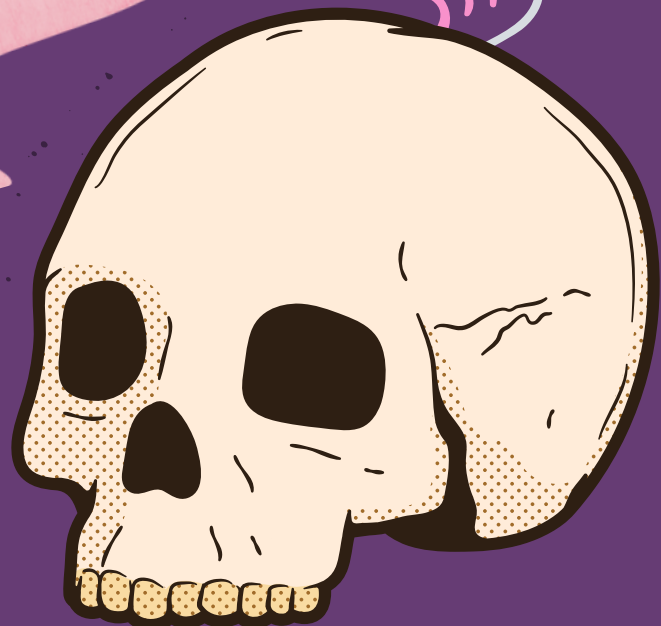


IF YOUR PERSONALITY WAS A
TAROT CARD, WHICH CARD
WOULD YOU DRAW? TAKE YOUR
ASSESSMENTS AND FIND OUT...



PSST...HEY!
IF YOU HAVE TROUBLE LOGGING
INTO YOUR AAMC ACCOUNT, THE
CAREER ADVISING OFFICE CAN
HELP. MORE INFO ON DISC TO
COME DURING THE
IPE COURSE.

BY: ABIGAIL GARZA, OMS II



I SEE SUCCESS IN YOUR FUTURE.